

Instruction Sheet

Subject: Wireless Datalink Remote Communication Configuration Instructions

Models affected: LOV, OCF and FilterQuick Fryers

Follow these instructions to configure the Datalink remote communication board for wireless communications.

1. Ensure the computer has these minimum basic requirements to operate the Datalink Remote

- | | |
|---------------------------|---|
| Hardware requirements: | Software requirements: |
| - Intel core i3 processor | - Windows 7 or higher |
| - 2 GB RAM | - Windows Service Pack 1 |
| - 14" screen display | - Microsoft Visual C++ 2013 Redistributable (x86) |
| | - Microsoft .NET framework 4.5.2 |

Communication software.

2. Ensure the computer that will be used to display the dashboard is connected to the same network that the fryer will communicate with (see Figure 1).
3. Note the password of the network as it will need to be used in a later step to configure the communication board.
Network password _____

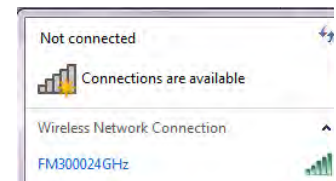


Figure 1

4. Insert the USB drive included in the kit into the computer that will communicate with the fryer.
5. Navigate to the USB drive if it doesn't open automatically (see Figure 2).

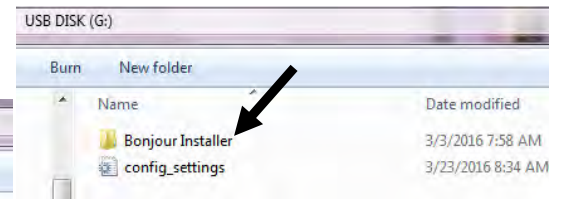


Figure 2

6. Click and open the Bonjour Installer folder (see Figure 3).

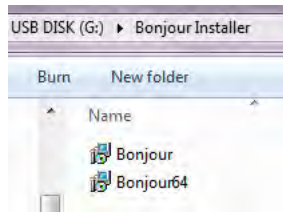


Figure 3

7. Depending on computer operating system, install either the standard 32-bit (Boujour) or 64 bit (Bonjour64) installer by clicking on the file and following the prompts. Once the file is selected skip to step 9. If unsure of operating system click on Windows button in the lower far left of the screen and right click on computer and then properties (see Figure 4).

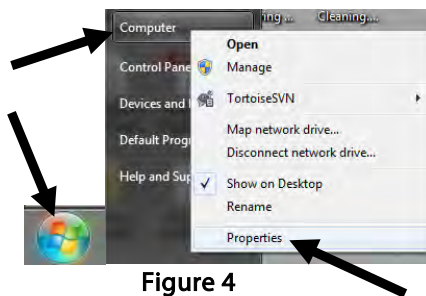


Figure 4

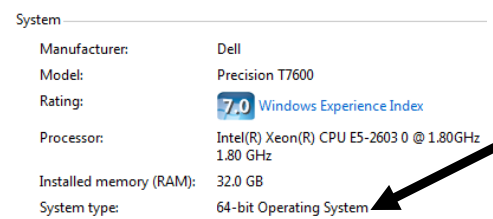


Figure 5

8. The system type will display either 32-bit or 64-bit operating system (see Figure 5). Close this window and return to step 7.

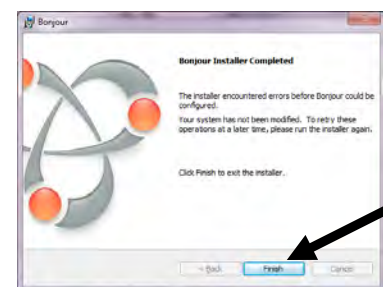


Figure 6

9. Bonjour will install unless already installed.
10. Click on Finish once Bonjour is installed (see Figure 6).

11. Locate the config_settings.ini file on the USB drive. Right click on it and Open with Notepad to edit the file (see Figure 7).



Figure 7

12. Locate the SSID name from the router (see Figure 1) and enter into SSID field (see Figure 8). It is **case sensitive**; enter the SSID **exactly** as it is displayed on network settings.

13. Enter the security type in the KEYTYPE field (see Figure 8).

14. Enter the network password in the KEYWORD field (see Figure 8).

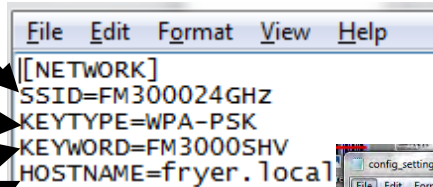


Figure 8

15. If using only a single fryer in the restaurant, leave the HOSTNAME as fryer.local. If more than one fryer is used in the store use fryer1.local for one fryer and fryer2.local for the other fryer to distinguish between the fryers. The name should be in all lowercase, maximum of 12 characters and no special characters and it should be unique within the restaurant. Enter the fryer serial number in the appropriate field.

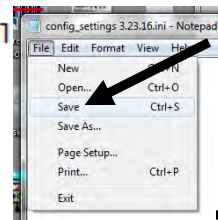


Figure 9

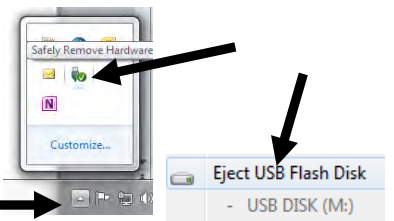


Figure 10

16. Click on File and Save (see Figure 9).

17. Click on Eject USB Flash Disk (see Figure 10).

18. Remove USB drive from computer.

19. Locate the USB communication port in the right cabinet (see Figure 11).



Figure 11



Figure 12

20. Slide the cover up and insert the USB drive into the communication port (see Figure 12) for two (2) minutes.

21. After two (2) minutes, remove the USB drive and power cycle the fryer using the reset switch or unplug the power cable from the rear of the datalink box.

22. Ensure the computer is connected to the same Wi-Fi network as the Datalink.

23. Wait an additional two (2) minutes and open the internet browser. It is recommended to use **Google Chrome**.

24. In the internet browser type in the address of the fryer (ex. <http://fryer.local>) ensuring that **http://** is typed before the address.



Figure 13

25. The dashboard should display (see Figure 13).

26. Click on Settings towards the upper left corner of the screen (see Figure 13).

27. Under Fryer Configuration in the

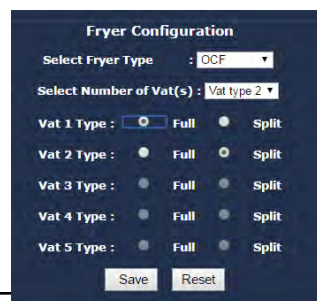


Figure 14

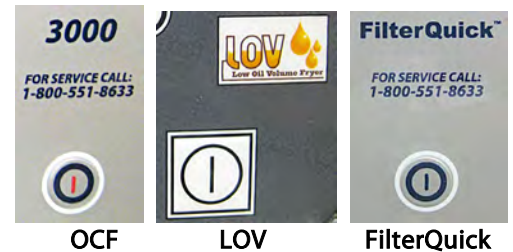


Figure 15

middle of the screen select the fryer type from the pull down menu (see Figure 14). Choose OCF, LOV or FilterQuick. The OCF will display 3000 on the controller; The LOV will display LOV on the controller (see Figure 15).

28. Select the number of vats from the pull down menu (see Figure 14).
29. Select the vat type of each vat either Full or Split (see Figure 14). The Split frypot has a divider down the middle (see Figure 16).
30. When the vat types are complete Click on Save (see Figure 14).
31. The settings are saved and the communication board reboots (see Figure 17).
32. After three (3) minutes click on Home in the upper right corner of the browser (see Figure 17).
33. The dashboard is displayed (see Figure 18).
34. The configuration is complete. See 8197364 for dashboard instructions.



Full Vat Split Vat
Figure 16

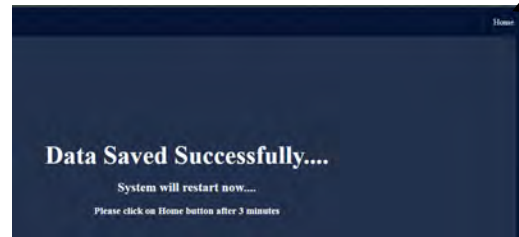


Figure 17



Figure 18